

From Cabins to Castles... Realize Your Dream

THE HILLTOP



There's a lot of functions incorporated into this efficient design.. The main floor includes an open kitchen, dining and great room as well as a master bedroom suite and laundry . The upper level has a loft area that can serve as an office, additional guest sleeping area, hobby room, etc. The lower level has room for a variety of optional living spaces including two more bedrooms. And a rec room. The vaulted ceilings, large expanses of glass and open flowing floor plan allows the home to take advantage of views as well as providing a bright, open living environment.

Main Level: 1,315 sq. ft. (+/-)

Upper Level : 215 sq. ft. (+/-)

Lower Level 1,315 sq. ft.
(+/-)

Total: 2,848 sq. ft.

ATRIUM LOG HOMES, LLC

EXCLUSIVE IMPORTER OF HONKA LOG HOME COMPONENTS



The World Leader in Log Homes

P.O. Box 536

Evergreen, CO 80437-0536

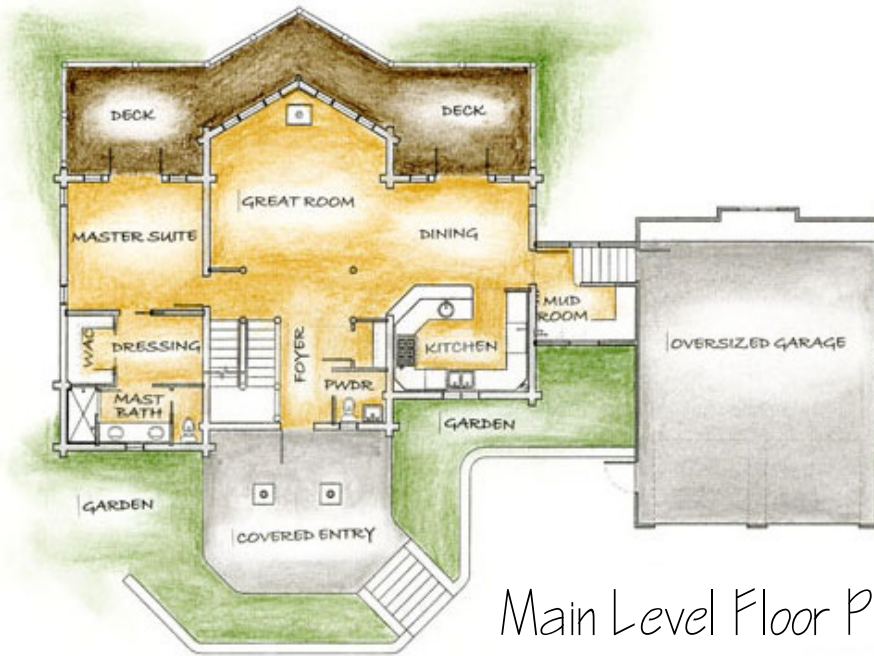
Phone: 720.352.7022

E-mail: Info@AtriumLogHomes.com

www.AtriumLogHomes.com

From Cabins to Castles... Realize Your Dream

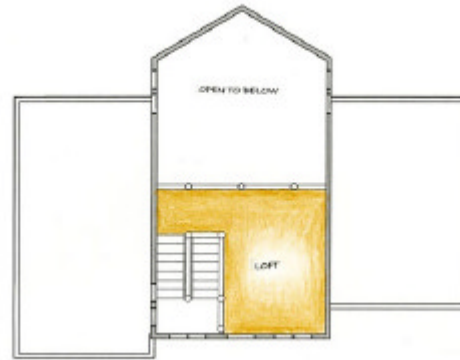
THE HILLTOP



Main Level Floor Plan



Lower Level Floor Plan



Upper Level Floor Plan

ATRIUM LOG HOMES, LLC

EXCLUSIVE IMPORTER OF HONKA LOG HOME COMPONENTS



The World Leader in Log Homes

P.O. Box 536

Evergreen, CO 80437-0536

Phone: 720.352.7022

E-mail: Info@AtriumLogHomes.com

www.AtriumLogHomes.com